



HEADQUARTERS

Switzerland
Bioengineering AG
Sagenrainstrasse 7
8636 Wald
Switzerland
Phone: +41 55 256 81 11
info@bioengineering.ch
www.bioengineering.ch

SUBSIDIARIES

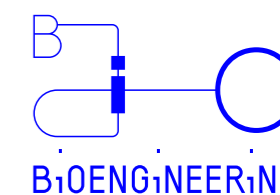
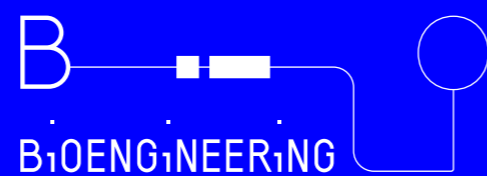
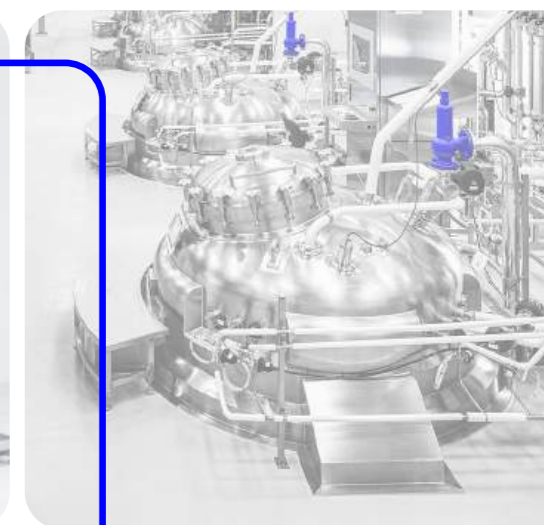
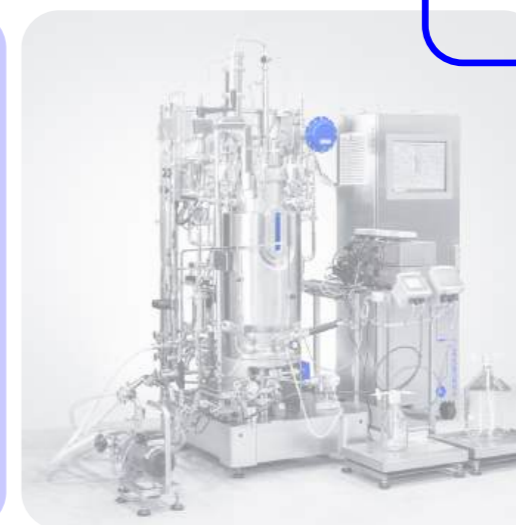
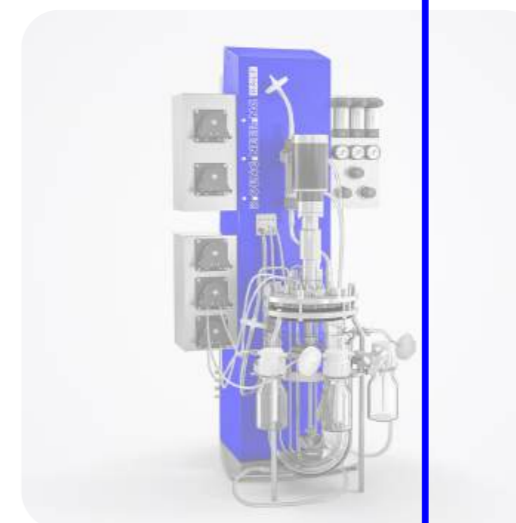
China
Bioengineering Shanghai
Trading Co. Ltd.
Rm 703B, Lee Kum Kee Building
No 970 Nanning Road
Shanghai 200235
China
Phone: +86 21 62350776
info@bioengineering.com.cn

Korea
Bioengineering Korea Ltd.
#708 Shinil IT Uto Bldg. 13, LS-ro
Gunpo-si, Gyeonggi-do, 15843
Republic of Korea
Phone: +82 2 6490 9909
info@bioengineering.co.kr

USA
Bioengineering Inc.
281 E Colorado Blvd #34, Pasadena
CA 91102
USA
Phone: +1 626 412-3233
info@bioengineering-inc.com

BIOENGINEERING

Improve your bioprocess





Bioprocessing facility for producing high-purity APIs and biologics under strict sterile conditions.

We offer reliable, customized systems and services to improve the efficiency of bioproduction.

WHO WE ARE

Bioengineering AG, founded in Switzerland with subsidiaries in Korea, China and the USA, has been a trusted partner to the biotech industry for over 50 years. Our global reach and depth of experience make us a valued choice for leading companies. Guided by continuous improvement and a culture of responsibility and solution-focused collaboration, we build trusted relationships that support progress and quality in every project.

WHAT WE DO

We design and build equipment and systems that improve the efficiency and reliability of bioproduction. Our engineering teams unify technological expertise with a deep understanding of customer needs to create customised bioreactors and fermenters for applications ranging from laboratory scale to production facilities. Committed to quality and partnership, we provide solutions that meet the evolving needs of the biotech and pharmaceutical industries.

WHY CHOOSE BIOENGINEERING?

- Passionate and professional project realisation
- From laboratory to production facilities
- Deep knowledge and experience
- Highest quality and efficiency standards
- Partnership for a lifetime



Engineering and manufacturing excellence in every size: our products grow with your needs.

From research to production

From the laboratory to large-scale production, Bioengineering provides the solutions to meet your needs. Our versatile range, from compact 1-litre lab reactors to customised production plant up to 30,000 litres reactors, grows with you – ensuring quality, reliability and scalability.



Bench scale

Lab scale

Pilot scale

Plants

Peripherals



KLF

KLF is the only in situ sterilizable glass benchtop fermenter on the market. It is ideal for research and downscaling studies and does not need to be moved for sterilization and – due to a fully drainable bottom drain valve – for cleaning.



RALF

The autoclavable benchtop series RALF comes in 3 variants: double walled for cell culture, single walled with perfused baffles for microbial fermentation, or as economic version single walled with heating pad.



NLF

The stainless steel fermenter NLF with up to 20L work volume is the transition between research and production. It can be equipped as manually operated simple research lab fermenter or as full GMP production plant (e.g. for RNA plasmids).



LP/P

Our standalone pilot fermenters from 33–1,000L work volume are standardized but with a wide variety of selectable components and therefore can be implemented easily and economically while still fitting the requirements of your process.



Plants

Fully customized in hardware and automation to user requirements for the most sensible GMP bio-pharmaceutical manufacturing as well as for the novel food and biotech industry, Bioengineering plants cover a large array of applications.



In addition to our core systems, we offer a range of versatile peripheral solutions:

- Media & Buffer vessel
- Formulation vessel
- CIP systems
- Inversina Mixers
- Dosing systems

References

Over 50 years of excellence. Hundreds of successfully realized projects around the world. **Trust in quality & experience.**



Multi-purpose cell culture production facility with five seed trains, each with 120L, 600L and 3,000L bioreactor systems, and two 15,000L production bioreactors per train.

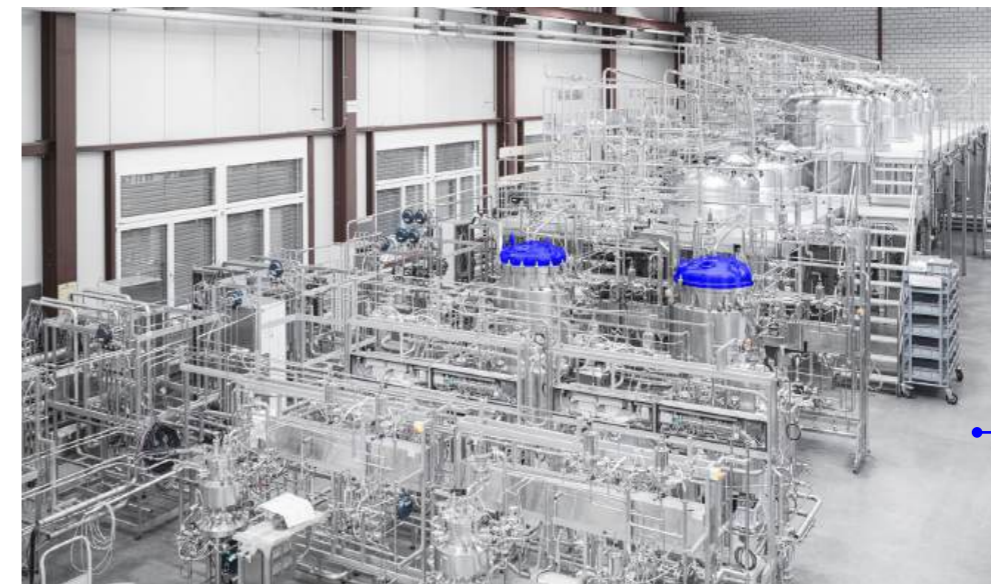


Novel Food.



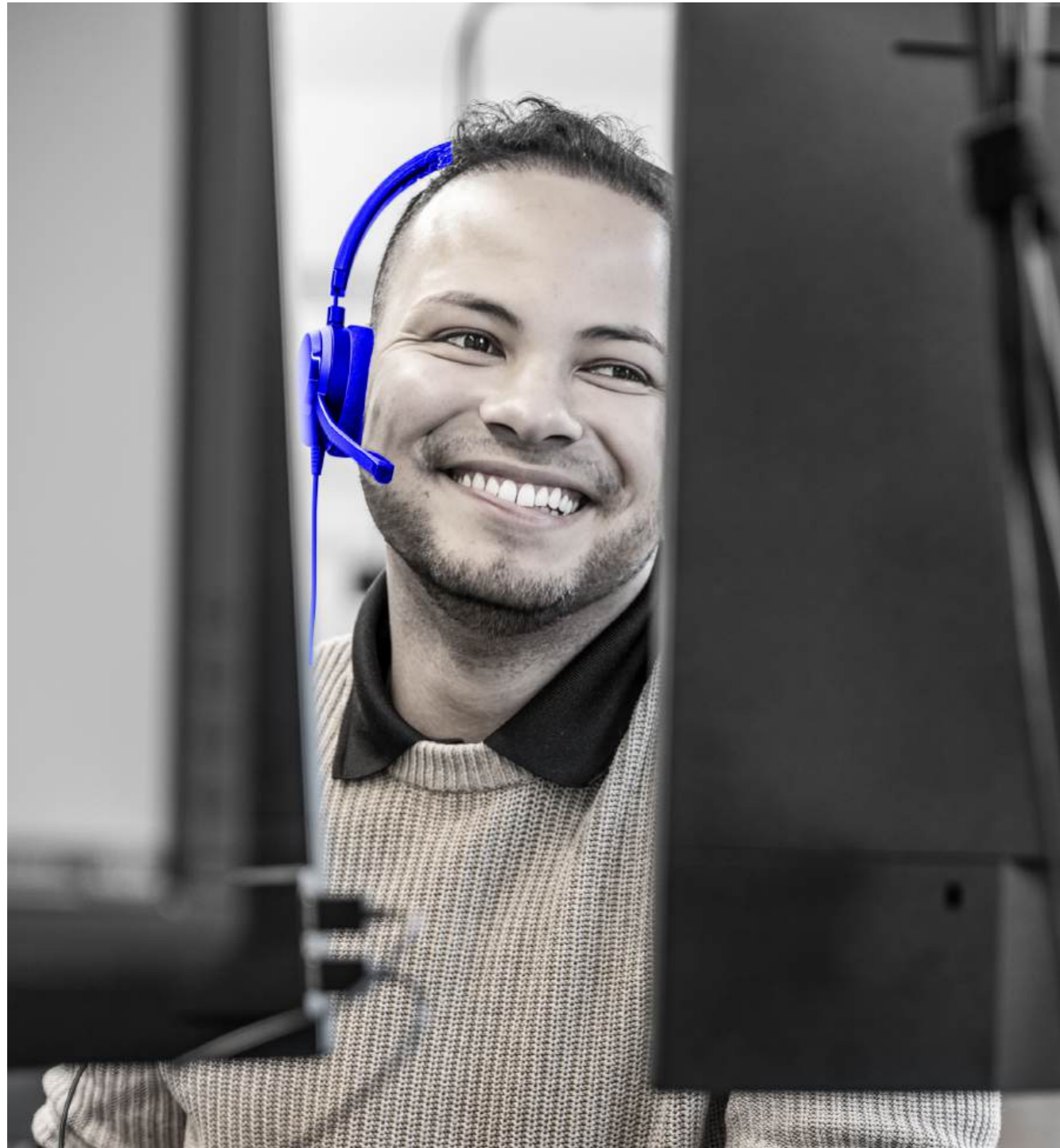
Microbial cultivation. Plant consisting of twelve 30L NLF and seven production fermenters 210L.

Mammalian cell cultivation. Mixing vessel for buffer solutions.



Foot and mouth disease cell culture plant consisting of two trains with volumes of 30L, 100L, 2,500L and 6,500L.

We offer you all the skills and services you need for successful and efficient project realization – **under one roof.**



What we provide

From project management and process engineering to automation and installation, we bring your vision to life with precision. Our full set of qualification services makes sure that your systems meet the highest standards and regulations. We also provide ongoing support, including maintenance and replacement parts for any issues. This ensures that your systems perform at their best, from lab reactors to full-scale production plants.



- Project management
- Process engineering
- Automation
- Manufacturing
- Qualification
- Onsite installation

- Service
 - Spare parts
 - Field service
 - Preventive maintenance
 - Technical support
 - Revamping
 - Training

Certifications

Our quality system ensures top standards through audits, certification, and supplier collaboration.

- ISO 9001
- ISO 3834-2 (Welding)

Where expertise meets satisfaction: Clients speak up.



“From our experience **we can simply say that it’s a masterpiece of engineering** and these fermenters are trustworthy and robust that the data generated from them are with high standard, reproducible and scalable.”

Ravi Kant, Ph.D.
COO, Head Process Development, Theragen
Biologics Pvt Ltd, India



“Following the Site Acceptance Test, the fermenter **was commissioned with excellent aseptic and performance results.**”

Luis Alirio Gutiérrez Guzman
Director de Proyectos de Ingeniería y Sostenibilidad,
VECOL S.A., Colombia



“From the moment we integrated the RALF fermenter into our laboratory, it was clear that **we had invested in a first class product.** The design of the fermenter is user-friendly, making it ideal for students to gain hands-on experience in bioprocessing.”

Dr. K. Anbarasu
Assistant Professor, Periyar Maniammai Institute of
Science and Technology, India




“Bioengineering’s bioreactors are well designed not only for operator safety but also for excellent durability. It also has good batch reproducibility, which satisfies our customers. Recently, we have had great experience in performing mechanical and automation upgrades with Bioengineering’s professional and cooperative team. **If I have to expand our plant, I have no hesitation in choosing Bioengineering.**”

Seung Ho Woo
Binex Co., Ltd, Korea



“Our KLF reactors have been running **for the past ten years without failure** with minimal maintenance.”

Prof. S. Meenakshisundaram
Centre for Biotechnology,
Anna University, India



“Thanks to its stable and robust system, I have been able to achieve many results.”

Mi-Gi Lee, Ph.D.
Principal Researcher,
Gyeonggido Business & Science Accelerator
Bio Industry Department, Korea

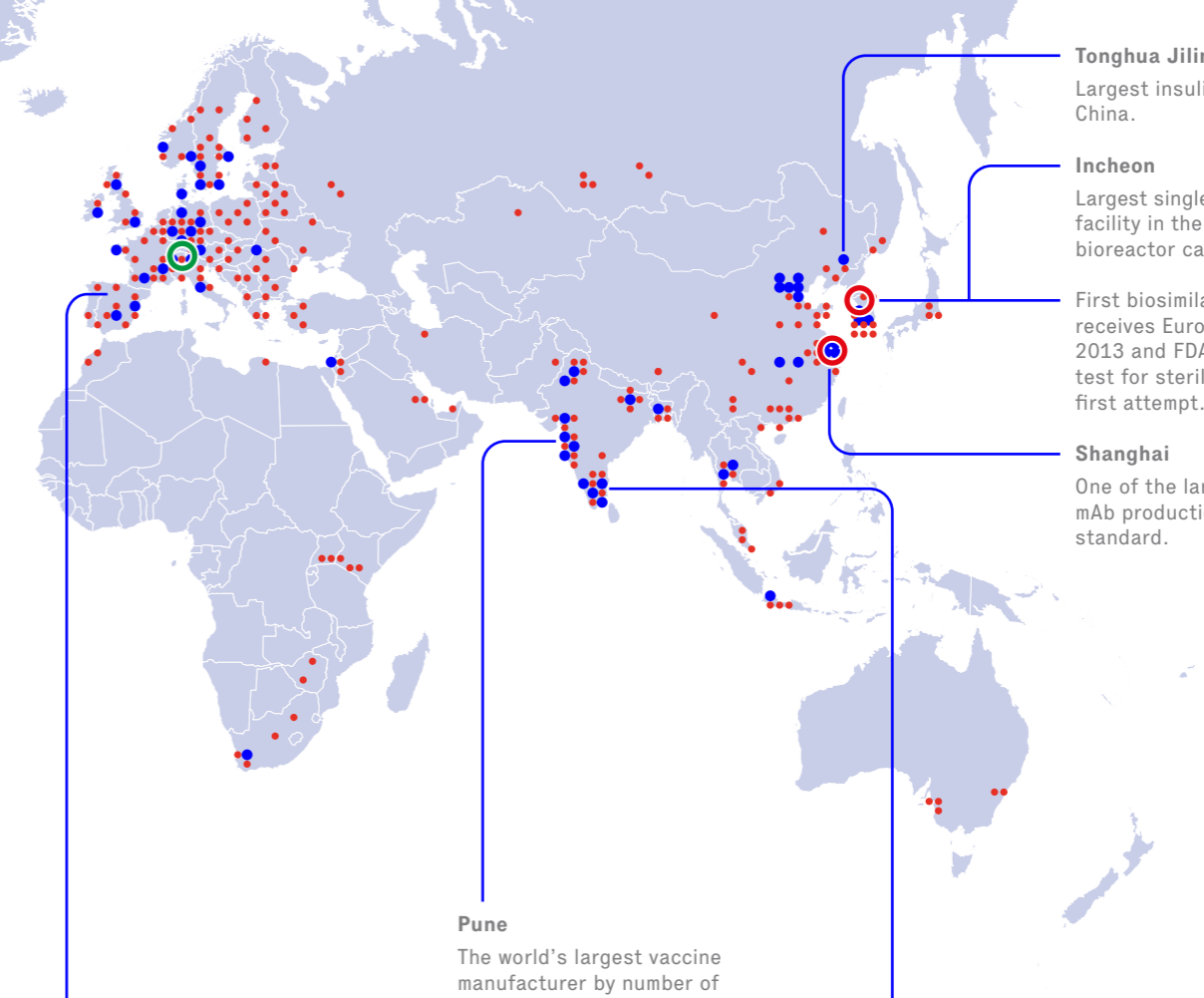
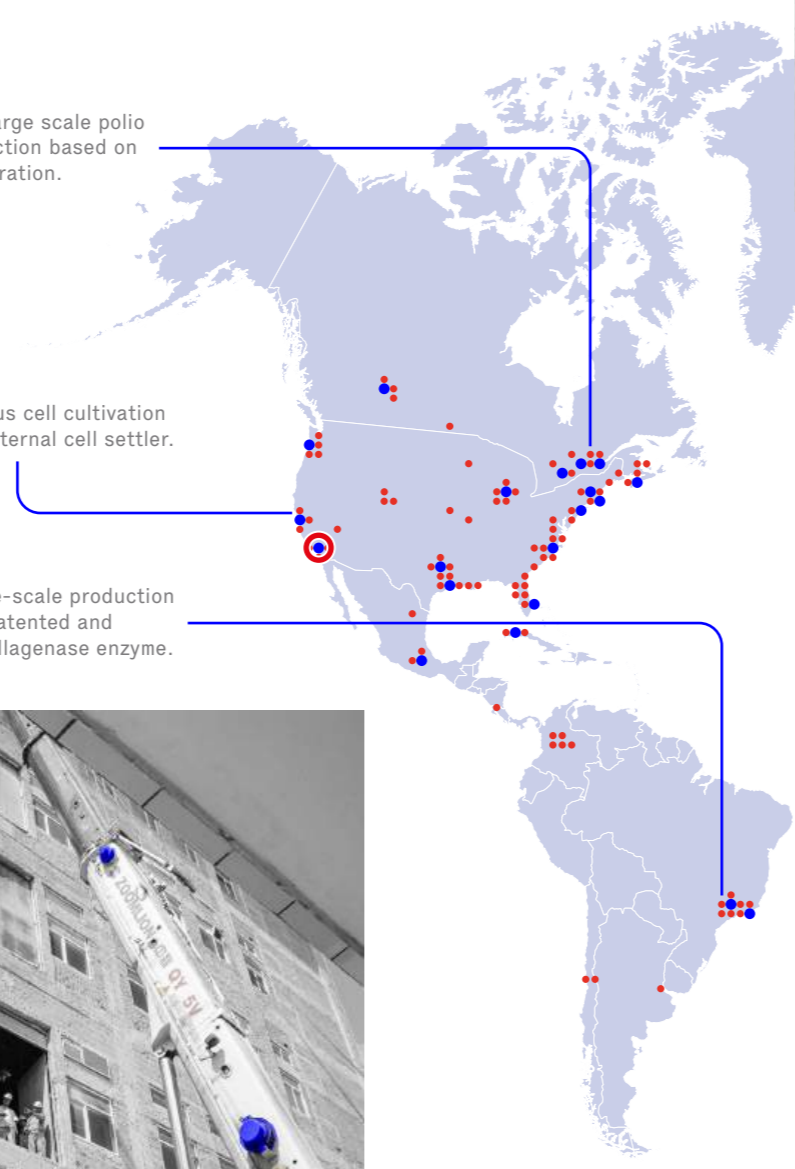
At home all over the world.

- HEADQUARTERS
Wald, Switzerland
- SUBSIDIARIES
Shanghai, China
Seoul, Korea
Pasadena, USA
- Production plant installations
- Lab & Pilot installations

Toronto
World's first large scale polio vaccine production based on bubble free aeration.

Berkley
First continuous cell cultivation system with external cell settler.

Itapira
Microbial large-scale production of a globally patented and animal-free collagenase enzyme.



Tonghua Jilin
Largest insulin production in China.

Incheon
Largest single bio manufacturing facility in the world in terms of bioreactor capacity.

First biosimilar mAb in the world receives European approval in 2013 and FDA approval in 2016, test for sterility passed at the first attempt.

Shanghai
One of the largest multipurpose mAb production according FDA standard.

Pune
The world's largest vaccine manufacturer by number of doses which includes diphtheria, tetanus, pertussis, mumps, measles, rabies, influenza, anti-sera, hepatitis B.

Bangalore
Largest cell culture plant in India.

Léon (ES)
First loop reactor for research and development on sea plants.



A culture that fosters collaboration and enables customized solutions for collective success.

Our company culture: Successful together

At Bioengineering AG, we are proud to build on decades of tradition, with responsibility and collaboration at the core of our culture. For over 50 years, we've cultivated a spirit of openness and support that enables our teams to achieve:

- Diversity and empowerment
- Customer focused solutions
- Lifelong learning culture
- Acting responsibly towards employees, clients, and society

