

# Ultra-Low Attachment Surface

NEST ultra-low attachment surface efficiently allows cells to form suspended 3D spheres, addressing the problems of abnormal flattening, division, and loss of differentiation phenotype that occur when cultured in vitro on a flat culture surface.

The ultra-low attachment surface is coated with a special hydrogel that inhibits specific and non-specific solidification. It is biologically inert, non-cytotoxic, and non-degradable, making it an ideal material for various culture vessels.

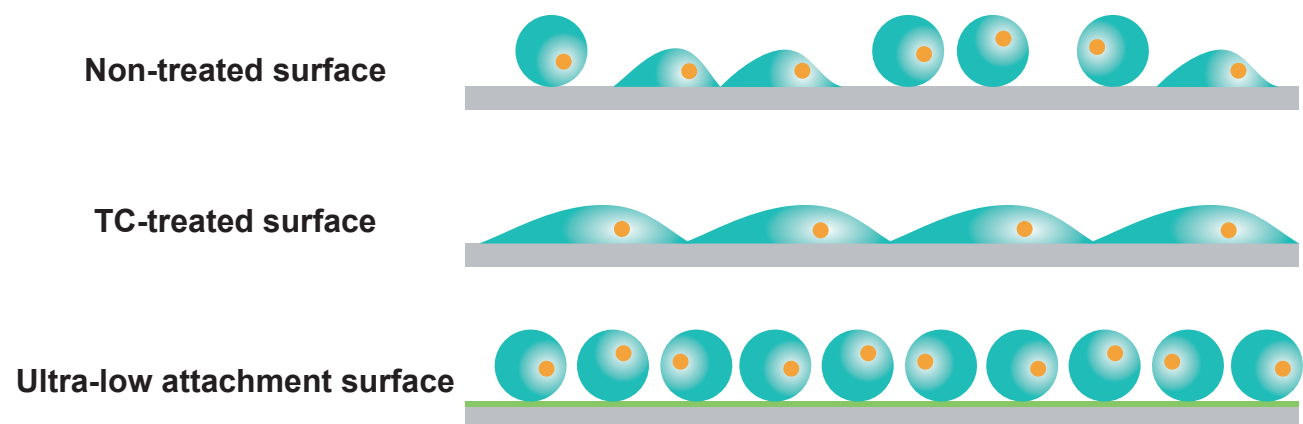
## Features

- Facilitates the formation of 3D multicellular spheres.
- Keeps cells suspended and non-adherent.
- Prevents specific stem cell differentiation induced by adhesion.
- Inhibits anchorage-dependent cells division.
- Reduces binding of attachment proteins and serum proteins to substrates.

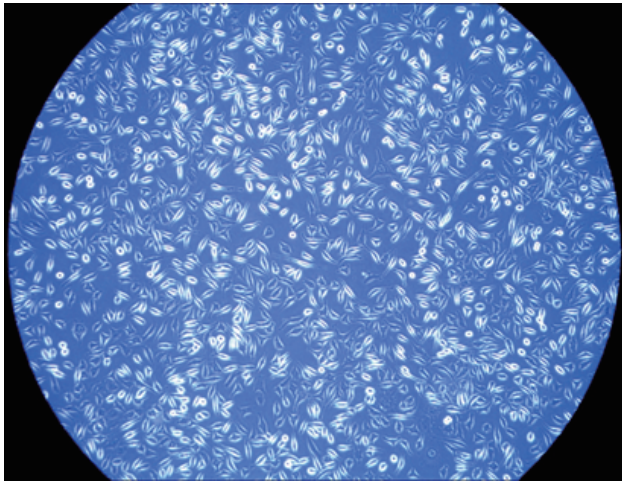
## Application

- Formation of 3D multicellular spheres, such as embryoid bodies and tumor spheroids.
- Formation of neurospheres in neurobiological research
- Formation of embryoid bodies in stem cell research
- Research on activation and deactivation mechanisms in lymphocytes, monocytes, macrophages, and other phagocytic cells.
- Suspension cell-based screening.
- Culture of cells, tissues, or organ fragments.
- Formation of multicellular spheres in tumor research.

## Schematic Diagram of Different Treatment Methods

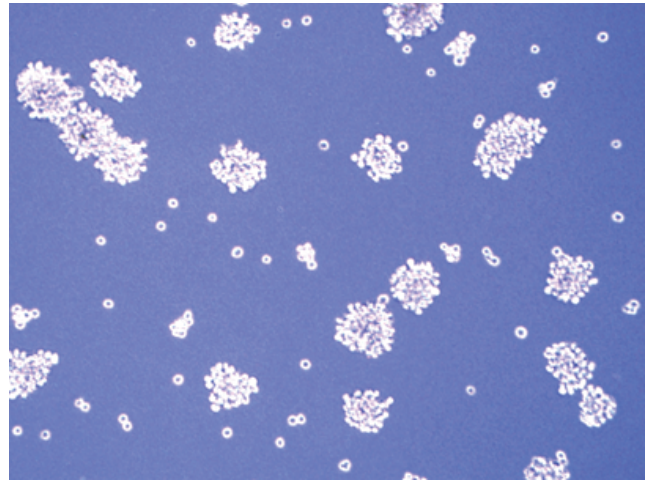


### TC-treated surface (L-929 cells)

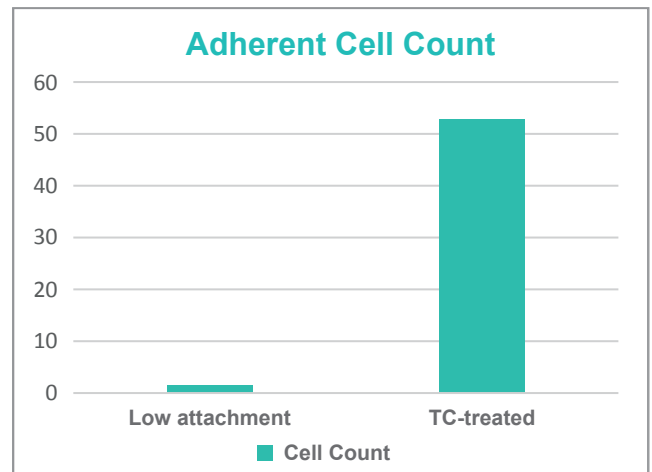
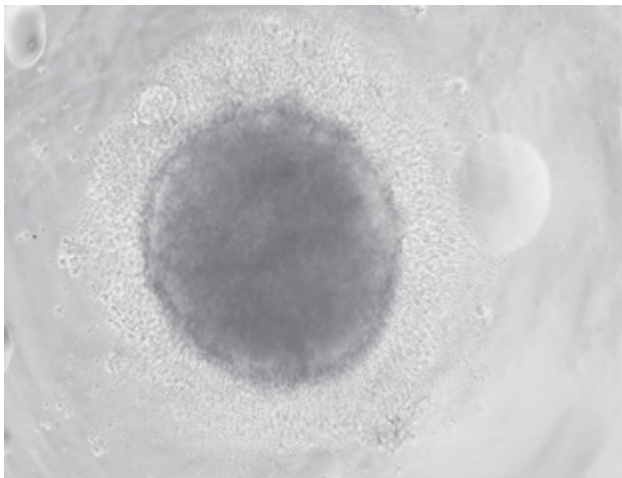


Multicellular spheres after 24 hours of culture

### Ultra-low attachment surface (L-929 cells)



Compared to the TC-treated product, cell attachment on the ultra-low attachment surface is reduced by 98%.



## Order Information

Product	Specifications			Packaging (Bagged)		Cat.No
	Well	Bottom	Sterile	Pcs/Pk	Pcs/Cs	
Cell Culture Plates	6	Clear, flat Bottom	Yes	1	20	70301B01
	12	Clear, flat Bottom	Yes	1	20	71201B01
	24	Clear, flat Bottom	Yes	1	20	70201B01
	96	Clear, flat Bottom	Yes	1	20	70101B01
	96	Clear, U-bottom	Yes	1	20	70111B01

Product	Specifications			Packaging (Bagged)		Cat.No
	Cell Growth Area (cm <sup>2</sup> )	Caps	Sterile	/Pack	/Case	
Cell Culture Flask	25 cm <sup>2</sup>	Vent caps	Yes	4	24	70711B01
	75 cm <sup>2</sup>	Vent caps	Yes	4	24	70811B01

Product	Specifications		Packaging (Bagged)		Cat.No	
	Specification (mm)		Sterile	/Pack		/Case
Cell Culture Dish	35 mm		Yes	5	20	70601B01
	60 mm		Yes	5	20	70501B01
	100 mm		Yes	5	20	70401B01



**NEST**  
NEST Biotechnology Co., Ltd.

Tel: +86-510-6800 6788  
E-mail: info@nest-wuxi.com  
Website: www.cell-nest.com