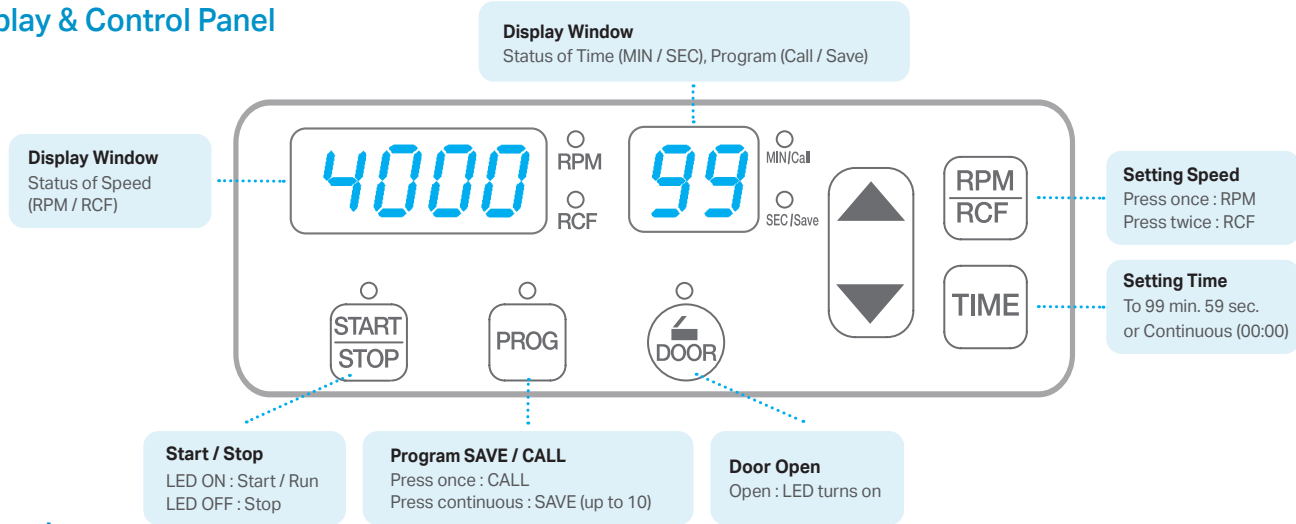


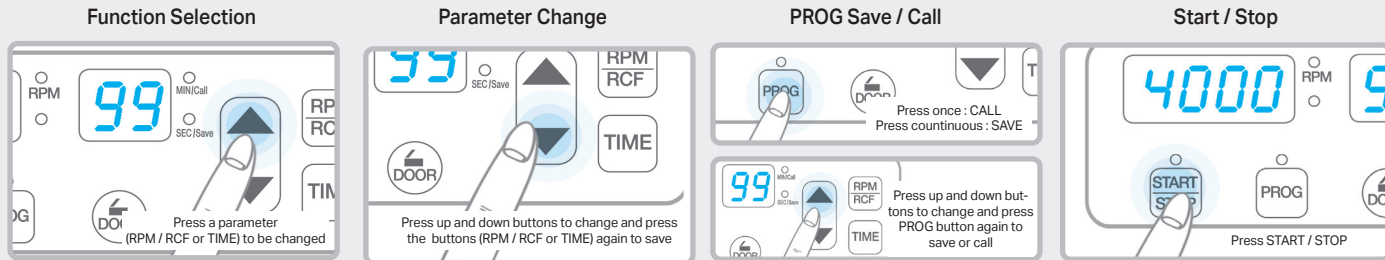


Display & Control Panel



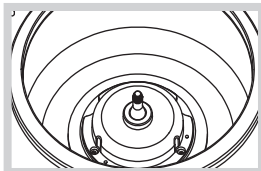
Operation

Cat. No. GZ-0406



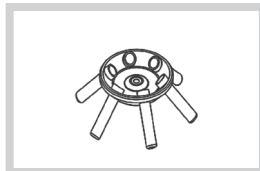


Precautions for Use



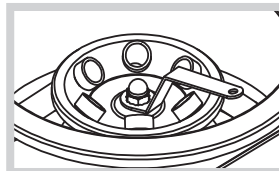
Chamber cleaning & checking

Clean the motor shaft. Remove the foreign substances not to cause any vibration.



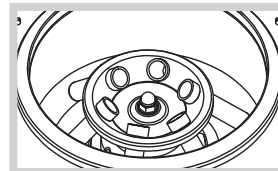
Checking accessories for damage

Inspect the rotor and accessories for damage before each use. Discontinue use and replace it if damaged.



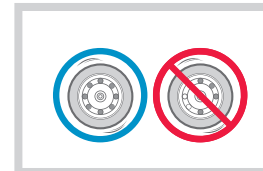
Rotor coupling and uncoupling

Mount a proper rotor into the motor shaft. Put the Washer at the center hole of the rotor and assemble Rotor Locking Nut by Rotor Locking Tool.



Rotor checking

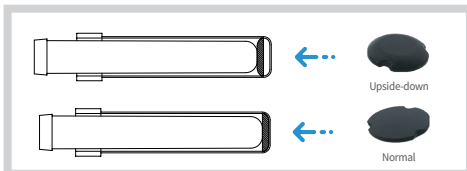
Check the rotor is installed correctly and is sitting firmly on the motor shaft.



Balancing the rotor

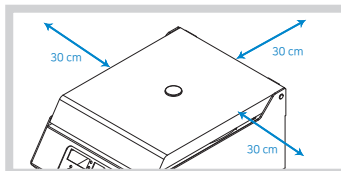
Load the sample symmetrically. It is most important to symmetrically mount samples of equal weight. In general, triple point symmetry is more stable than opposite symmetry.

Maintenance Tips



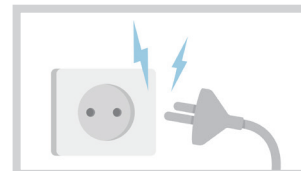
Cushion rubber of rotor sleeve

After washing or autoclaving, a cushion rubber at the bottom of rotor sleeve (GLB-15A-FA) may fall out of the sleeve and it can cause imbalance. Also, the rubber has a correct direction. The upside-down rubber cause poorly fitted tube from the sleeve. Check the rubber in the sleeve and the direction of the rubber.



Secure a safety zone or 30 cm around centrifuge

Position the centrifuge with enough space (30 cm) on each side of centrifuge to ensure proper air circulation. Neither hazardous materials nor persons should be permitted within the area during operation.



Electrical safety

Use the power cord supplied with the device and connect the device to the power supplies that match the electrical requirements. Switch off the device and disconnect the power plug after using the centrifuge.

GAS-3(15) for 3 mL tubes

GAS-4(15) for 4 mL tubes

GAS-5(15) for 5 mL tubes

No adaptor, with GLB-15A-FA of GRA-15-6A for 10 / 15 / 15 mL conical tubes

* 406 is basically equipped with GRA-15-6A

Interchangeable adaptors