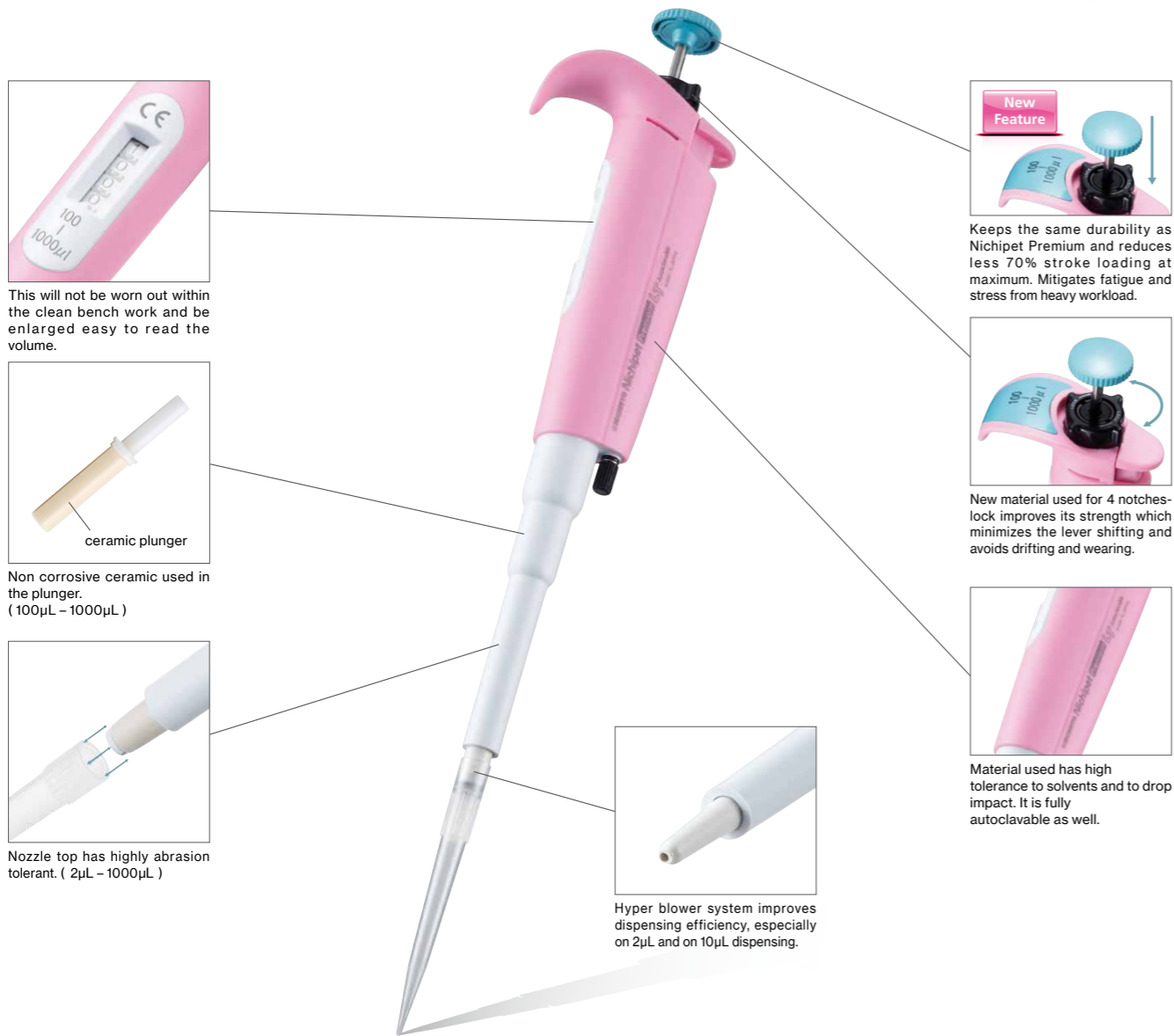


Autoclavable Micro Pipette

Nichipet[®] Premium LT

Innovation in "Fatigue-Free" & "Comfort"

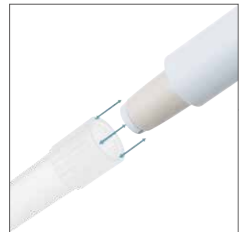
5-year warranty



This will not be worn out within the clean bench work and be enlarged easy to read the volume.



Non corrosive ceramic used in the plunger. (100µL - 1000µL)



Nozzle top has highly abrasion tolerant. (2µL - 1000µL)



Hyper blower system improves dispensing efficiency, especially on 2µL and on 10µL dispensing.



Keeps the same durability as Nichipet Premium and reduces less 70% stroke loading at maximum. Mitigates fatigue and stress from heavy workload.

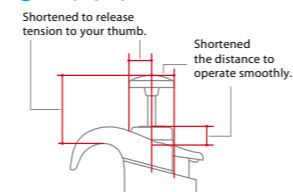


New material used for 4 notches-lock improves its strength which minimizes the lever shifting and avoids drifting and wearing.



Material used has high tolerance to solvents and to drop impact. It is fully autoclavable as well.

What's new!



The durability still is same as Nichipet Premium has. Stroke loading of Nichipet Premium LT becomes less 70% at maximum than before.

Hand temperature doesn't permeate through the body of the pipette which works to avoid affecting volume measurement. (Patented)

*All features of Nichipet Premium are available on Nichipet Premium LT.

- Since the volume indicator is made of glass, ultraviolet germicidal of the clean bench will not make it cloud.
- From prolonged irradiation, the surface layer of plastic may deteriorate or discolor, but its performance is not affected.

Specifications

Cat. No	Volume Setting	Volume range(µL)	Increments(µL)	Usable tips
00-NLT-2	Digital Setting	0.1 - 2	0.002	BMT2-UT/UTWR/UTWRB, FUT/FUTRB
00-NLT-10		0.5 - 10	0.01	BMT2-SSW/SSWR/SSWRB, FSS/FSSRB
00-NLT-20		2 - 20	0.02	BMT2-SG/SGR/SGRB, FSG/FSGRB
00-NLT-100		10 - 100	0.1	BMT2-SG/SGR/SGRB, FSE/FSERB
00-NLT-200		20 - 200	0.2	BMT2-SG/SGR/SGRB, FAG/FAGRB
00-NLT-1000		100 - 1000	1	BMT2-LG/LGR/LGRB, FLG/FLGRB

*See p.21-22 for tip selection.

Accuracy and Precision

Cat. No	Volume(µL)	Accuracy (%)	Precision (%)	Cat. No	Volume(µL)	Accuracy (%)	Precision (%)
00-NLT-2	0.2	±12.0*	≤6.0*	00-NLT-100	10	±2.0	≤1.0
	1	±5.0	≤2.5		50	±1.0	≤0.3
	2	±3.0	≤1.0		100	±0.8	≤0.3
00-NLT-10	1	±4.0*	≤3.0*	00-NLT-200	20	±1.0	≤0.5
	5	±1.0	≤1.0		100	±0.8	≤0.3
	10	±1.0	≤0.5		200	±0.8	≤0.2
00-NLT-20	2	±5.0	≤3.0	00-NLT-1000	100	±1.0	≤0.5
	10	±1.0	≤1.0		500	±0.8	≤0.3
	20	±1.0	≤0.4		1000	±0.7	≤0.2

*Each accuracy and precision are the values which come from measuring with our compatible tip.
*The AC and CV of NLT-2 below 0.2µL and NLT-10 below 1µL depend on the sampling skill and the sampling condition where pipettes are used.

Nichiryō's quality starter packages

Nichipet Premium LT S-PAC

- Package type of 3 selected Pipettes with racked -Tips.
- Ready-to-start packages with 3 sizes of pipettes to perform high AC and CV pipetting.
- 3 packages are available to cover wide range of volume.



Nichipet Premium LT 3 pcs, Racked Tip 3 or 4 racks, Tube Opener 3 pcs



Nichiryō Tube Opener (code:00-NTO)
"Easier" and "safer" to open tube lid with holding pipette

- Attached on grip end, 0.5, 1.5 mL tube and screw cap can be opened easily.
- *Compatible with Nichipet Premium LT (2-1000µL) and Nichipet EX II (2-1000µL)

Nichipet Premium LT S-PAC

Description	Cat. No	Content
Nichipet Premium LT S-PAC A	00-SP-AL	NLT-10, NLT-100, NLT-1000 BMT2-SSWR (0.5~10 µL), BMT2-SGR (2~200 µL), BMT2-LGR (100~1000 µL), NTO
Nichipet Premium LT S-PAC B	00-SP-BL	NLT-20, NLT-200, NLT-1000 BMT2-SGR (2~200 µL) × 2, BMT2-LGR (100~1000 µL), NTO
Nichipet Premium LT S-PAC H	00-SP-HL	NLT-2, NLT-10, NLT-100 BMT2-UTWR (0.1~10 µL) × 2, BMT2-SSWR (0.5~10 µL), BMT2-SGR (2~200 µL), NTO